

Heirmosi of the Canon
of the
Exaltation of the Holy Cross
Tone VIII
Znamenny Chant

Ode I



Trac-ing an upright line with his staff, Mos - es di - vid - ed the Red



Sea for Is - ra - el who fled on foot; and strik-ing it a transverse blow, he



brought the wa - ters to - geth - er up - on the cha - ri - ots of Phar -



oah, there - by in - scrib - ing the in - vin - ci - ble weap - on of the Cross.



Therefore let us hymn Christ our God, for He hath been glo - ri - fied.

Ode III



The rod of Aar-on is un - der - stood to be an im - age of this mys - ter -



y; for when it bud - ded forth it showed who should be priest. So in the



Church that once was bar - ren the tree__ of the Cross hath now__ bud - ded



forth for Her might and con - fir - ma - - tion.

Ode IV



I have heard, O Lord the mys - ter - y__ of Thy dis - pen - sa - - tion.



I have un - der - stood Thy works, and I__ have glo - ri - fied Thy di -



vin - - i - ty.

Ode V



O thrice-blessed Tree whereon Christ our King and_ Lord was_ cru - ci -

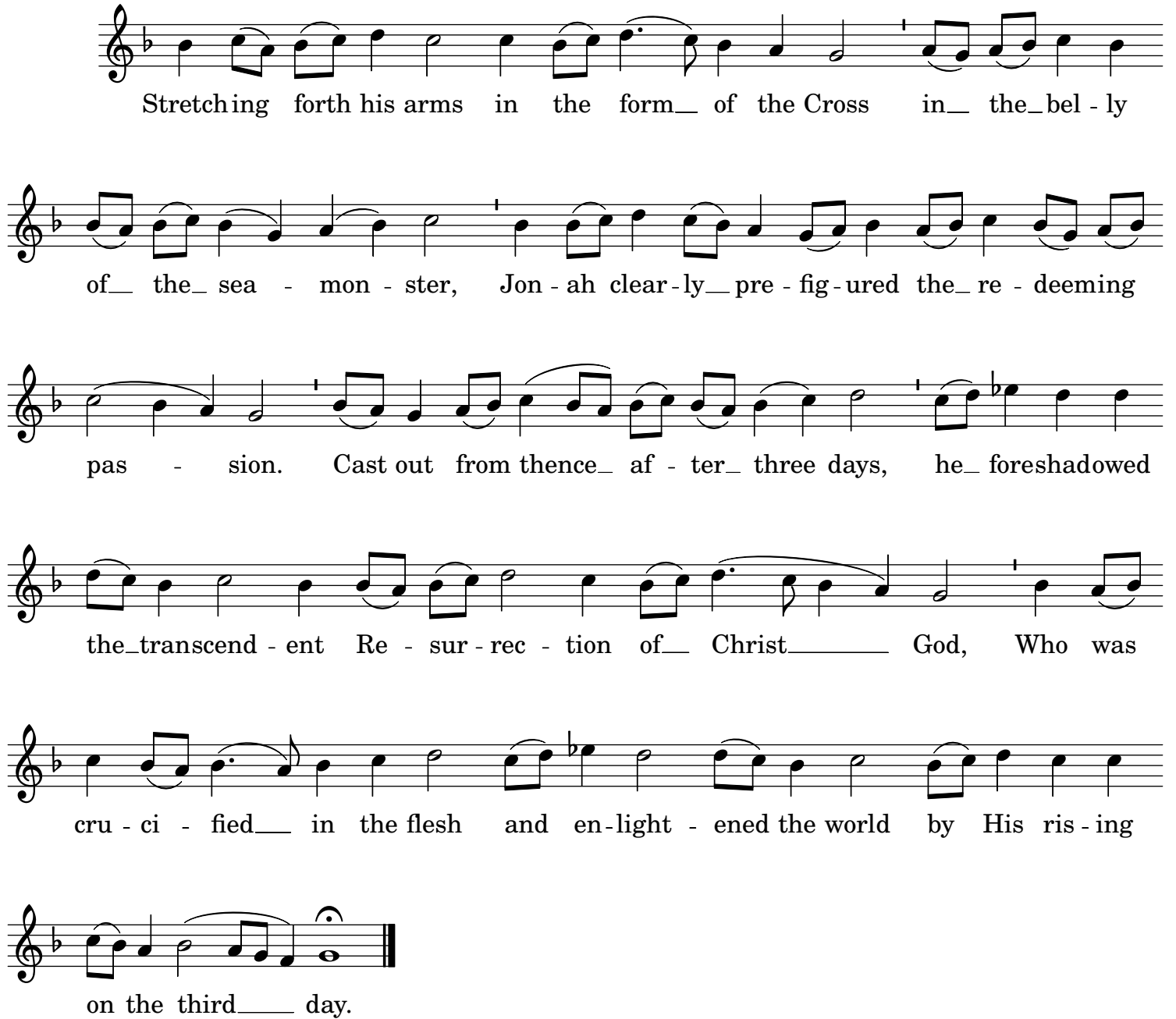


fied, and whereby He that beguiled man - kind by the_ tree__ did fall when



God was nailed in the flesh, Who grant - eth peace to_our souls.

Ode VI

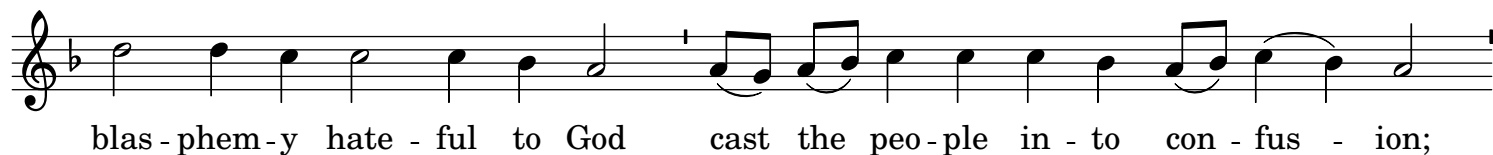


Stretching forth his arms in the form of the Cross in the bel - ly
of the sea - mon - ster, Jon - ah clear - ly pre - fig - ured the re - deeming
pas - sion. Cast out from thence af - ter three days, he foreshadowed
the transcend - ent Re - sur - rec - tion of Christ God, Who was
cru - ci - fied in the flesh and en - light - ened the world by His ris - ing
on the third day.

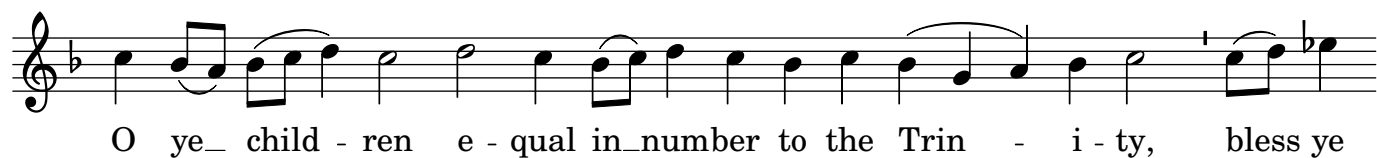
Ode VII



The mad command of the un - god - ly ty - rant, breathing forth threats and



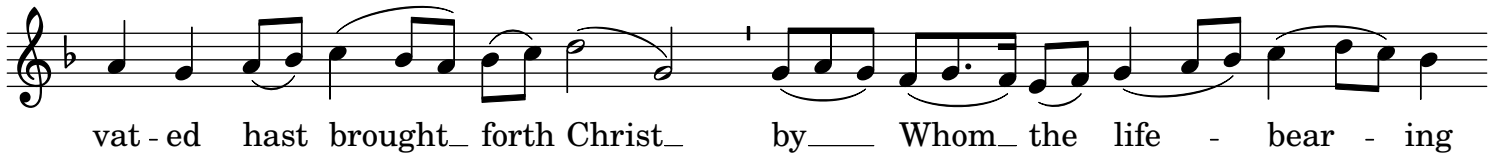
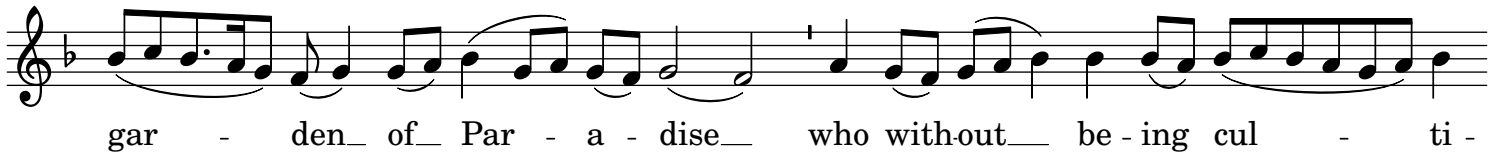
Ode VIII

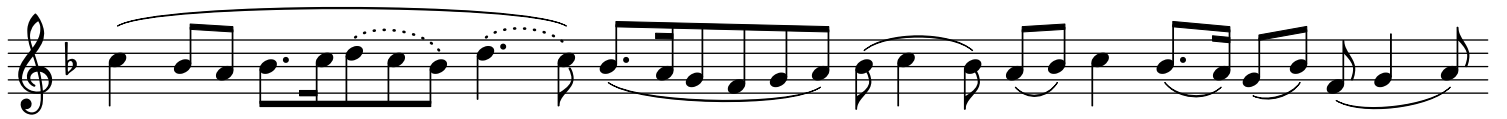


Ode IX

Deacon:

of the Lord.

Chanters:



wor - - - ship Him and we mag - ni - fy

The first line of musical notation is on a single staff in G major (one sharp) and 4/4 time. It begins with a treble clef and a key signature of one sharp (F#). The melody starts with a half note G4, followed by quarter notes A4, B4, and C5. A dotted half note G4 is followed by a dotted half note F#4. The melody continues with quarter notes E4, D4, C4, B3, and A3. The lyrics 'wor - - - ship Him and we mag - ni - fy' are written below the staff, with hyphens indicating syllables that span across multiple notes.



Thee...

The second line of musical notation is on a single staff in G major (one sharp) and 4/4 time. It begins with a treble clef and a key signature of one sharp (F#). The melody consists of quarter notes G4, A4, and B4, followed by a half note G4. The lyrics 'Thee...' are written below the staff.